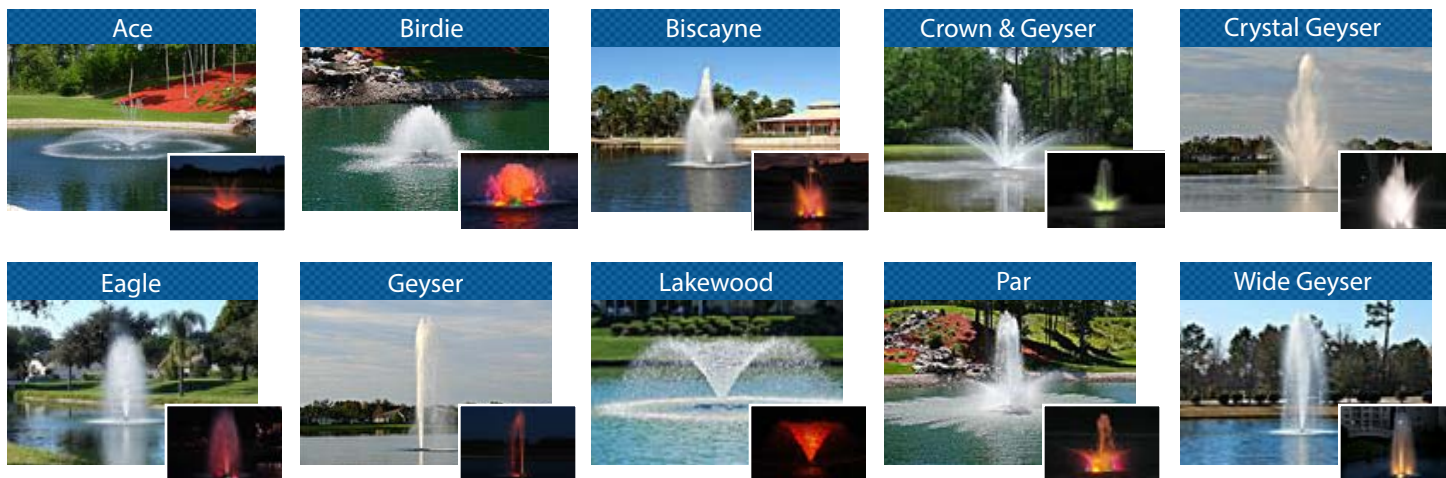


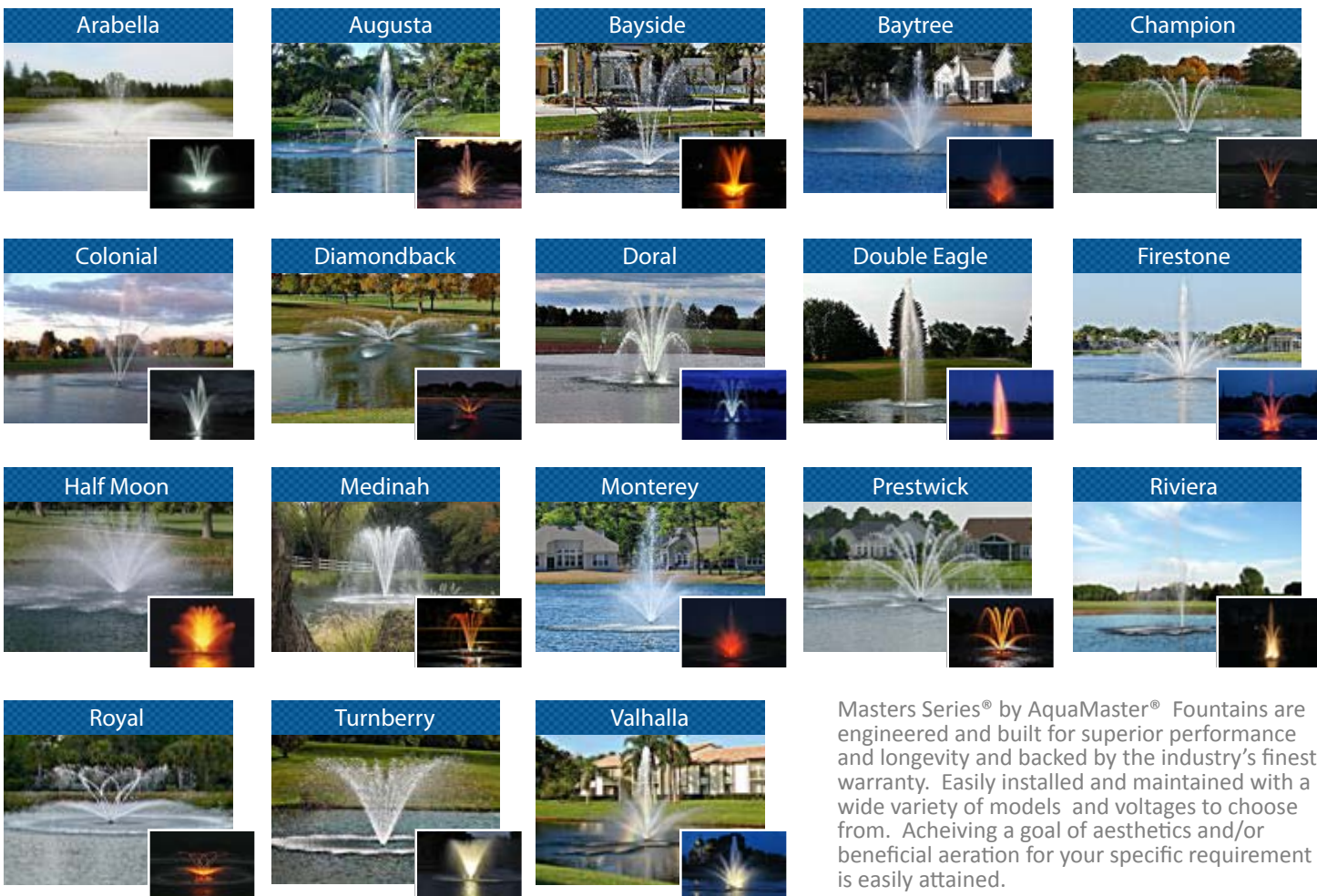
## Basic Flow Patterns

This group of patterns are easily interchanged with each other to create a variety of patterns.



## Straightened Flow Patterns

This group includes patterns utilizing flow straightener technology and are easily interchanged with each other.





MASTER THE **POWER** AND **BEAUTY** OF WATER

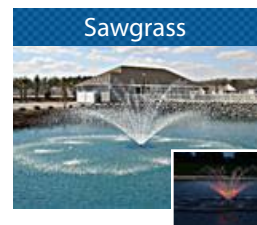
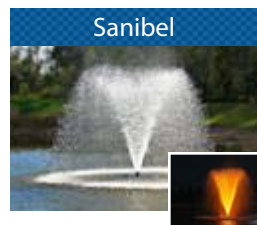
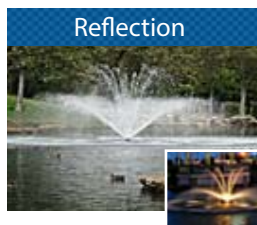
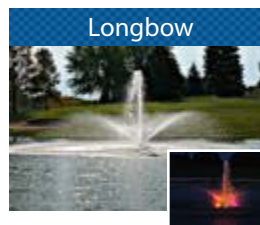
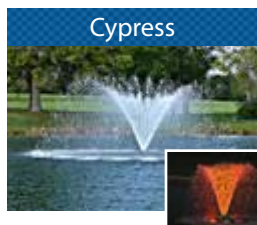
# MASTERS SERIES®

Discover the Power & Beauty of the Masters Series® by AquaMaster®. These revolutionary fountains are available in a wide variety of spray patterns. All Masters Series® (except Captiva & Kiawah) are interchangeable and provide you with the ability to change spray patterns. (Flow straightener may be required.) This flexibility gives you the power to create dazzling waterscapes while improving water quality.

Floating Fountains • Fixed Based Water Feature Fountains • High Performance Aeration Systems • Lighting • Accessories

## Adjustable Straightened Flow Patterns

This group of patterns dimensions can be easily adjusted by the turning of the lock nut assembly. Patterns in this group are interchangeable with each other.



## Specialty Patterns

The popular Captiva pattern utilizes a specialty nozzle assembly and is not interchangeable. The Kiawah high horsepower two-tier pattern utilizes a spray ring assembly and is not interchangeable.



## Features & Design

**Masters Series® high quality fountains designed to perform; built to last.**

AquaMasters® Masters Series® fountains are engineered and built for superior performance and longevity and backed by the industry's finest warranty. This series is easy to install and maintain with a wide variety of models and voltages to choose from and attaining your goal of beautiful aesthetics and beneficial aeration that suit your specific requirements is easy to do!

- 30+ spray patterns
- ½ to 10HP models
- Three design types
  - Vertical
  - Horizontal
  - Cart (7½ – 10HP)
- Easy Installation and Maintenance
- Available in all voltages, 60 Hz and 50 Hz \*
- Domestic 60 Hz total package UL LISTING for safety assurance
- Fountain
  - Control panel
  - Specific underwater rated power cable
  - Lighting
- Backed by superior factory warranties
  - 5 years (½ – 5HP)
  - 3 years (7½ – 10HP)
- Exclusive underwater AquaLock Connector (ALC) cable quick disconnect available on ½ HP to 5 HP models
- 16" Minimum operating depth 1 - 5 HP Horizontal Design
- Interchangeable Nozzles
- Recessed Night Glow Lighting - LED
- Stainless steel motor housing
- Custom-designed Oil-cooled energy efficient motors
- Oversized Stainless steel intake screen
- Patented, High-efficiency stainless steel impeller system

\*International 60 Hz and 50 Hz do not ship with control panel



**Distributed By:**